



EVENTS BROCHURE

— *London* —



FLIGHT CLUB IS THE BIRTHPLACE OF SOCIAL DARTS. WE'VE TAKEN THE TRADITIONAL GAME OF DARTS AND SUPERCHARGED IT - USING UNIQUE, PATENTED TECHNOLOGY TO CREATE A SEAMLESS SOCIAL EXPERIENCE LIKE NO OTHER.

“Events at Flight Club are the ultimate combination of engaging, competitive, memorable and most of all fun. We don't do anything by halves, so we promise you and your team an experience to remember. We're passionate about what we do and we'll do everything we can to make sure that you have the best time with us.”

**STEVE MOORE
FLIGHT CLUB CO-FOUNDER**





YOUR EVENT

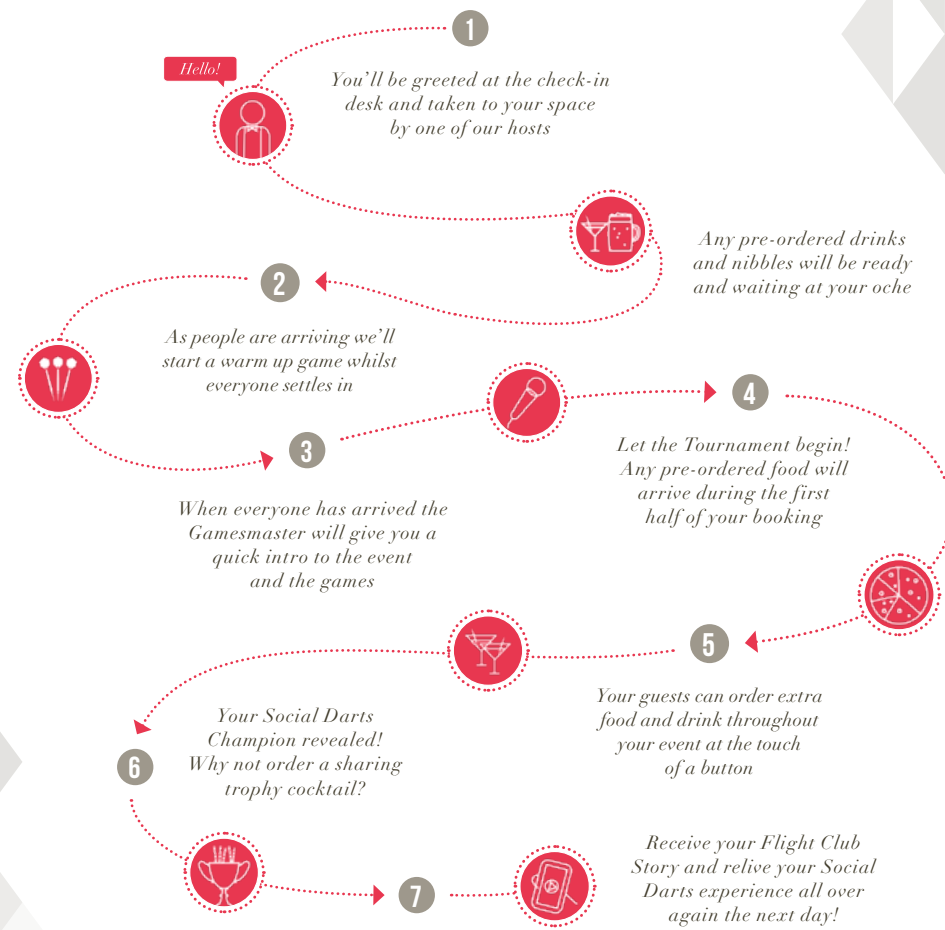
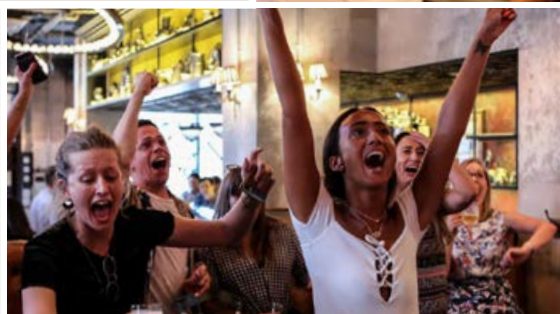
A social experience like no other. We've lovingly created beautifully designed venues, serving bespoke cocktails from our award-winning bars as well as delicious sharing food for groups of all sizes.

"We've developed unique technology which means we take care of everything; scoring, changing games, switching teams, even ordering food and drinks. You don't need to worry about a thing – we are confident you won't get this experience anywhere else."

PAUL BARHAM
FLIGHT CLUB CO-FOUNDER

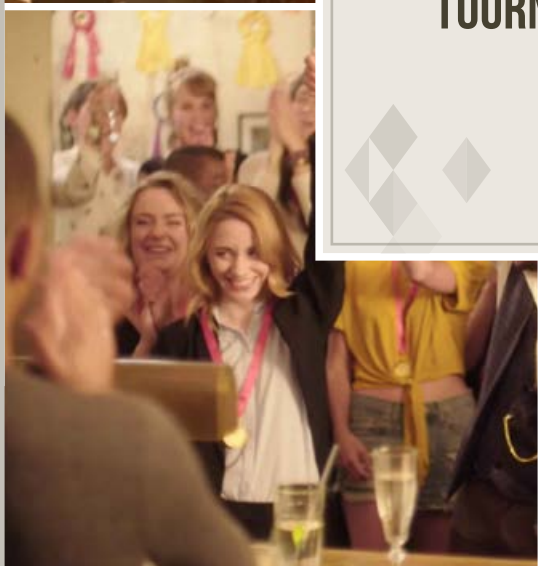


HOW YOUR EVENT WILL RUN





TOURNAMENTS



There are two ways to play.
Go head-to-head in our Classic Tournament,
or set groups against each other
in our Team Tournament.

CLASSIC TOURNAMENT

PERFECT FOR

A spontaneous event

An event where your guestlist
may need some flexibility

HOW IT WORKS

We'll chart the score of individuals
throughout your event. A number of
games will be played across multiple oches.

CLASSIC FINAL

The top six players in the Social Darts
Classic Tournament enter a final – there's
only one Social Darts Champion! Winners
will walk away with their very own Flight Club
complimentary medals!

TEAM TOURNAMENT

PERFECT FOR

Teams who love a bit of competition

An event where your guestlist is fixed

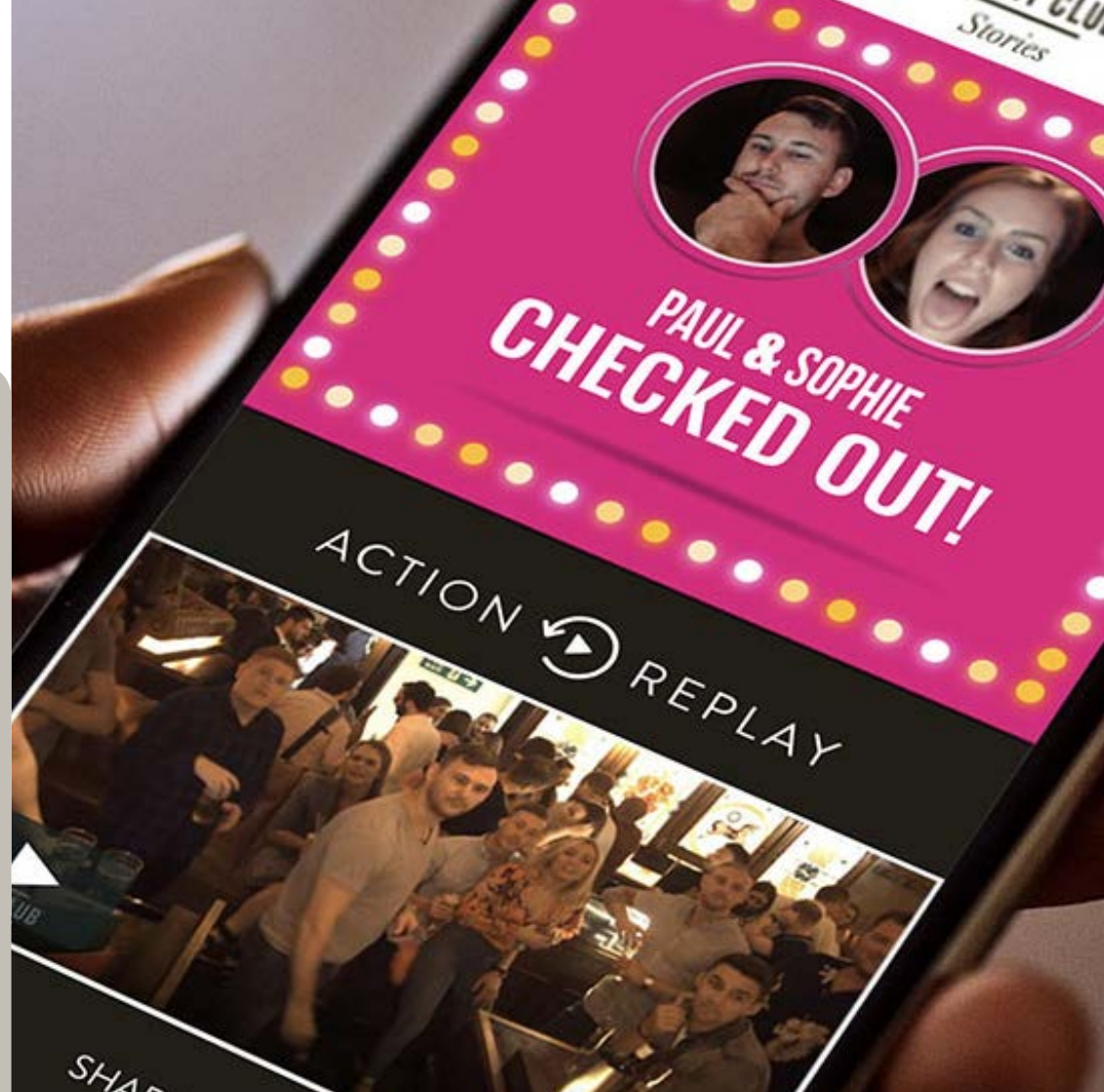
HOW IT WORKS

Multiple teams of up to six players
will play against each other.

If you want to be tactical, choose your team
members wisely! Get your thinking hats on
for an awesome team name, we'll need these
plus players' names, seven days in advance
of your event.

TEAM FINAL

The top 2 scoring teams in your Social Darts
Team Tournament play head-to-head in the
epic final! As well as ultimate bragging rights,
winners will receive their very own Flight Club
complimentary Medals!



FLIGHT CLUB[®]

Stories

The fun doesn't need to stop once you've left the oche. An industry-first; Flight Club Stories lets you and your guests revisit your Social Darts experience.

It's a bespoke journey through your time in the oche with photos, action replays of winning shots and loopcam group videos.

Stories lets you relive the wins, and losses, providing ultimate bragging rights and the ability to share your memories from Flight Club.



FOOD & DRINKS PACKAGES

We've developed a range of delicious mix 'n' share dishes, individual plates and canapés to cater to all tastes and dietary requirements, making sure none of your guests go hungry.

“Our food and drink is brought to you at the oche and is designed to be enjoyed while you play, so all you need to focus on is your game. Round off your booking with one of our sharing trophy cocktails and everyone's a winner!”

TOM MORGAN
FLIGHT CLUB EXECUTIVE HEAD CHEF

REGULAR PACKAGES

THE ROOKIE £35 PER HEAD*

DRINKS

2 BOTTLES OF BEER OR
HALF A BOTTLE OF HOUSE WINE
PER GUEST

5 CANAPÉS

KOREAN BEEF SKEWERS

GRILLED PRAWNS WITH MANGO SALSA

BUTTERMILK CHICKEN SKEWERS

VEGETABLE GYOZA WITH PONZU DIPPING SAUCE *V VG*

AVOCADO ON TOAST WITH CHILLI & TOMATO SALSA *V VG*

PIZZA

WE'LL PROVIDE A SELECTION OF OUR MEAT AND
VEGETARIAN PIZZAS TO FILL YOUR GUESTS UP

DESSERT

A SELECTION OF CHOCOLATE BROWNIES
AND ROCKY ROAD BITES *V*

THE PRO £55 PER HEAD*

DRINKS

BUBBLY RECEPTION

4 BOTTLES OF BEER OR
1 BOTTLE OF HOUSE WINE
PER GUEST

8 CANAPÉS

BEEF BURGER WITH PICKLES, CHEESE, STREAKY
BACON AND BLOODY MARY SAUCE

PORTOBELLO MUSHROOM BURGERS WITH
HALLOUMI, SPINACH AND CHIPOTLE MAYO *V*

GRILLED PRAWN SKEWERS WITH MANGO SALSA *GF*

VEGETABLE GYOZA WITH PONZU DIPPING SAUCE *V VG*

AVOCADO ON TOAST WITH CHILLI & TOMATO SALSA *V VG*

BUTTERMILK CHICKEN SKEWERS *GF*

KOREAN BEEF SKEWERS *GF*

CHICKEN TIKKA SKEWERS *GF*

PIZZA

WE'LL PROVIDE A SELECTION OF OUR MEAT AND
VEGETARIAN PIZZAS TO FILL YOUR GUESTS UP

DESSERT

A SELECTION OF CHOCOLATE BROWNIES
AND ROCKY ROAD BITES *V*

CHRISTMAS PACKAGES*

THE ELF £40 PER HEAD*

DRINKS

2 BOTTLES OF BEER OR
HALF A BOTTLE OF HOUSE WINE
PER GUEST

6 CANAPÉS

KOREAN BEEF SKEWERS

GRILLED PRAWNS WITH MANGO SALSA

BUTTERMILK CHICKEN SKEWERS

VEGETABLE GYOZA WITH PONZU DIPPING SAUCE *V VG*

AVOCADO ON TOAST WITH CHILLI & TOMATO SALSA *V VG*

PIGS IN BLANKETS

PIZZA

WE'LL PROVIDE A SELECTION OF OUR MEAT AND
VEGETARIAN PIZZAS TO FILL YOUR GUESTS UP

DESSERT

A SELECTION OF CHOCOLATE BROWNIE BITES,
MINCE PIES AND ICE CREAM SANDWICHES *V*

THE SANTA £60 PER HEAD*

DRINKS

BUBBLY RECEPTION

4 BOTTLES OF BEER OR
1 BOTTLE OF PROSECCO
OR 1 BOTTLE OF HOUSE WINE
PER GUEST

9 CANAPÉS

BEEF BURGER WITH PICKLES, CHEESE, STREAKY
BACON AND BLOODY MARY SAUCE

PORTOBELLO MUSHROOM BURGERS WITH
HALLOUMI, SPINACH AND CHIPOTLE MAYO *V*

GRILLED PRAWN SKEWERS WITH MANGO SALSA *GF*

VEGETABLE GYOZA WITH PONZU DIPPING SAUCE *V VG*

AVOCADO ON TOAST WITH CHILLI & TOMATO SALSA *V VG*

BUTTERMILK CHICKEN SKEWERS *GF*

KOREAN BEEF SKEWERS *GF*

CHICKEN TIKKA SKEWERS *GF*

PIGS IN BLANKETS

PIZZA

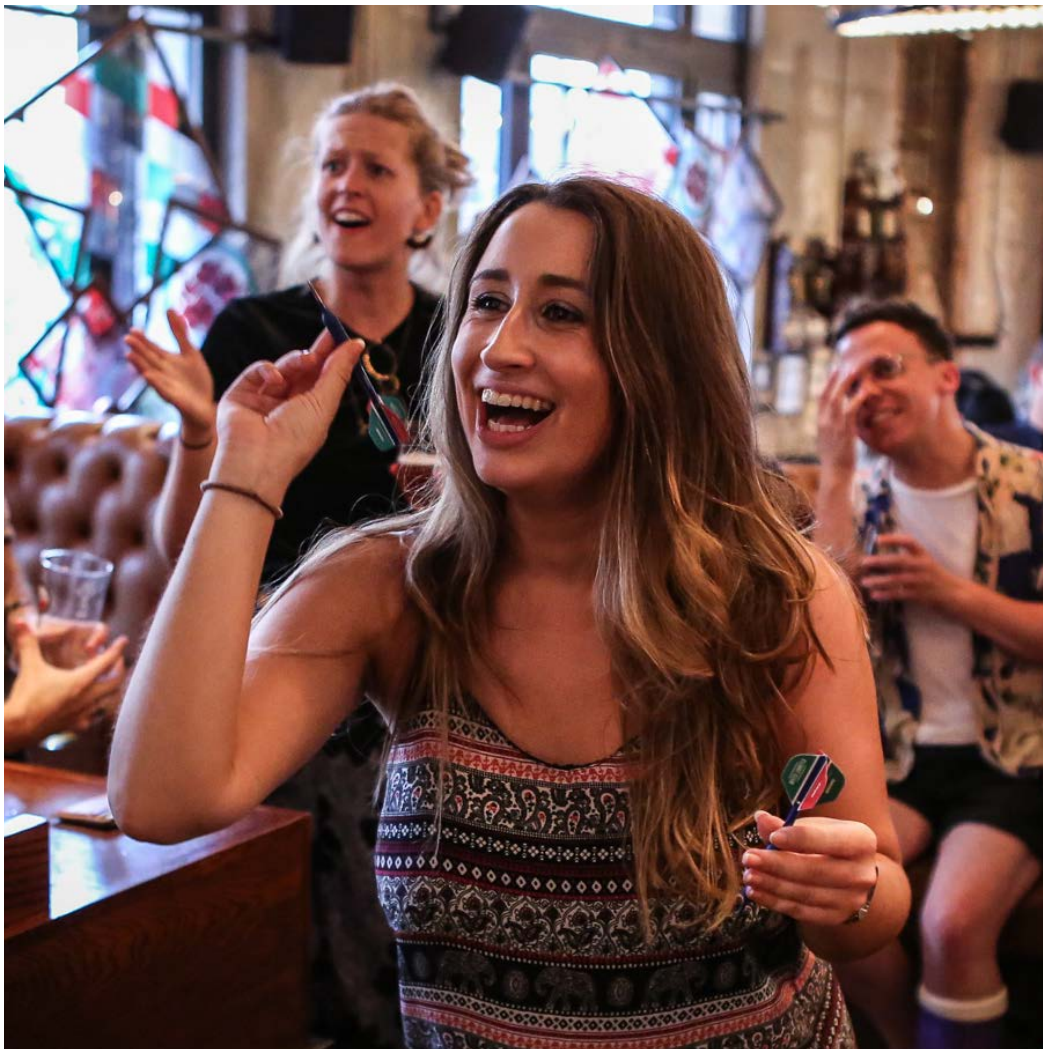
WE'LL PROVIDE A SELECTION OF OUR MEAT AND
VEGETARIAN PIZZAS TO FILL YOUR GUESTS UP

DESSERT

A SELECTION OF CHOCOLATE BROWNIE BITES,
MINCE PIES AND ICE CREAM SANDWICHES *V*

*Available throughout the year. We also have vegetarian, vegan and gluten free packages available. If you'd prefer just to have drinks and a few nibbles, please let us know and we'll be happy to put together a bespoke package to suit you. Please note that a discretionary 12.5% service charge will be added at the time of booking.

*Only available during December and content is subject to change. We also have vegetarian, vegan and gluten free packages available. If you'd prefer just to have drinks and a few nibbles, please let us know and we'll be happy to put together a bespoke package to suit you. Please note that a discretionary 12.5% service charge will be added at the time of booking.



OUR VENUES & EVENTS SPACES

“Our events and bookings teams are experts in their field, dedicated to ensuring every event at Flight Club goes off without a hitch and guests have an unforgettable Social Darts experience, from their first step inside to their triumphant departure.”

LOUISE ADDRISON
BUSINESS DEVELOPMENT MANAGER

ISLINGTON

OPENING TIMES

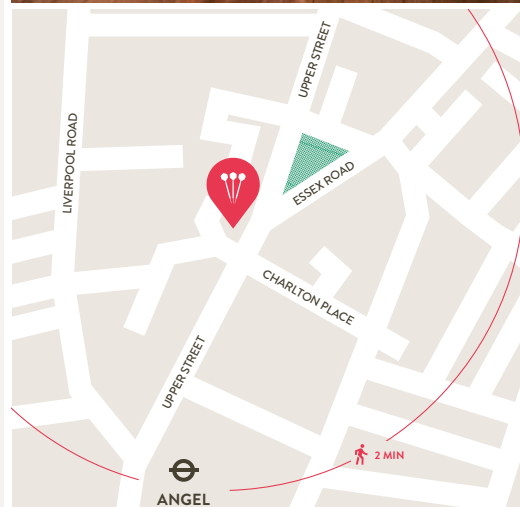
MONDAY	11:30 - 00:00
TUESDAY	11:30 - 00:00
WEDNESDAY	11:30 - 00:00
THURSDAY	11:30 - 00:30
FRIDAY	11:30 - 02:00
SATURDAY	11:00 - 02:00
SUNDAY	11:30 - 23:30

Opening hours are subject to change, for updated hours, including Christmas, please visit our website.

WHERE TO FIND US

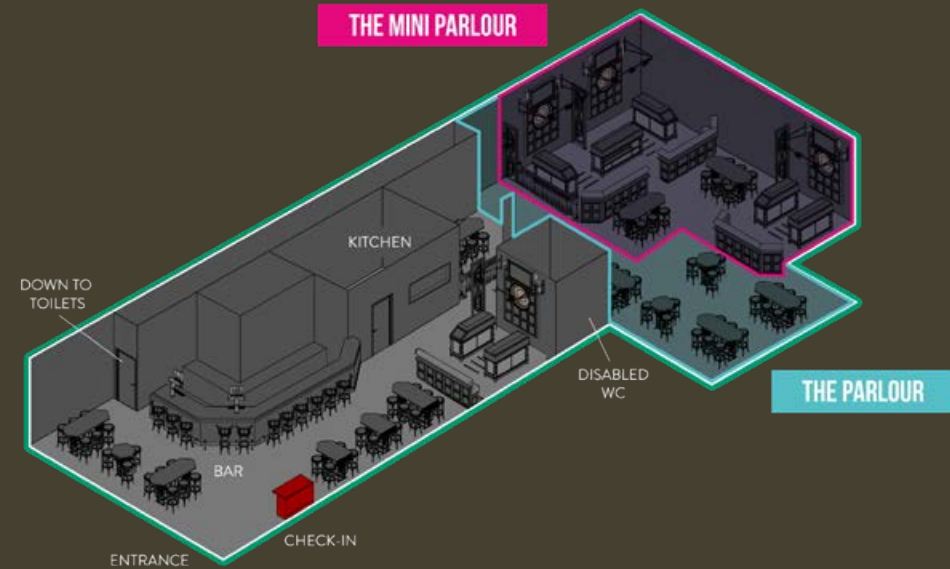
56, Upper Street, Islington
London, N1 0NY

2 minute walk from Angel Station
15 minute walk from Highbury
& Islington Station



AVAILABLE SPACE

We have areas to book for up to 150 people





THE MINI PARLOUR SEMI-PRIVATE AREA



GUEST CAPACITY	30-50 PEOPLE
NUMBER OF OCHES	3
DAYTIME MINIMUM SPEND	from: £450
EVENING MINIMUM SPEND	from: £1,500
PRESENTATIONS AVAILABLE	YES

If you want to host an event focused on discovering your guests' Social Darts talents, The Mini Parlour is ideal.

With three oches and a central seating area, there's plenty of space for you and your guests to test your throw. And, you'll be in the welcome company of Poppy, our fairground horse, who'll be sure to see your event runs smoothly.



THE PARLOUR SEMI-PRIVATE AREA



GUEST CAPACITY **40-70 PEOPLE**

NUMBER OF OCHES **3**

DAYTIME MINIMUM SPEND **from: £500**

EVENING MINIMUM SPEND **from: £2,000**

PRESENTATIONS AVAILABLE **YES**

Immerse yourself in the incredible atmosphere of The Parlour. With three oches and plenty of seating, this space is perfect for groups of 40 to 70 people.

When your guests aren't stepping up to the throw line, they can take a seat amongst The Devil's Mile, a mural that nods to Upper Street being infamously described as "one of the most disagreeable thoroughfares in London" by Charles Dickens due to the notoriety of night-time entertainments.



ISLINGTON FULL VENUE



GUEST CAPACITY	150 PEOPLE
NUMBER OF OCHES	4
DAYTIME MINIMUM SPEND	POA
EVENING MINIMUM SPEND	POA
PRESENTATIONS AVAILABLE	YES

Have the ultimate Social Darts experience with full venue hire. You and your guests will have exclusive access to four stunning oches and a range of seating areas; perfect for sitting back with one of our bespoke cocktails or signature slushies.

With plenty of room for an unforgettable event, this makes for a completely unique Flight Club experience. Whether it's for a birthday, company social or a special celebration.

SHOREDITCH

OPENING TIMES

MONDAY	11:30 - 00:00
TUESDAY	11:30 - 00:00
WEDNESDAY	11:30 - 00:00
THURSDAY	11:30 - 00:30
FRIDAY	11:30 - 01:00
SATURDAY	11:00 - 01:00
SUNDAY	11:30 - 22:30

Opening hours are subject to change, for updated hours, including Christmas, please visit our website.

WHERE TO FIND US

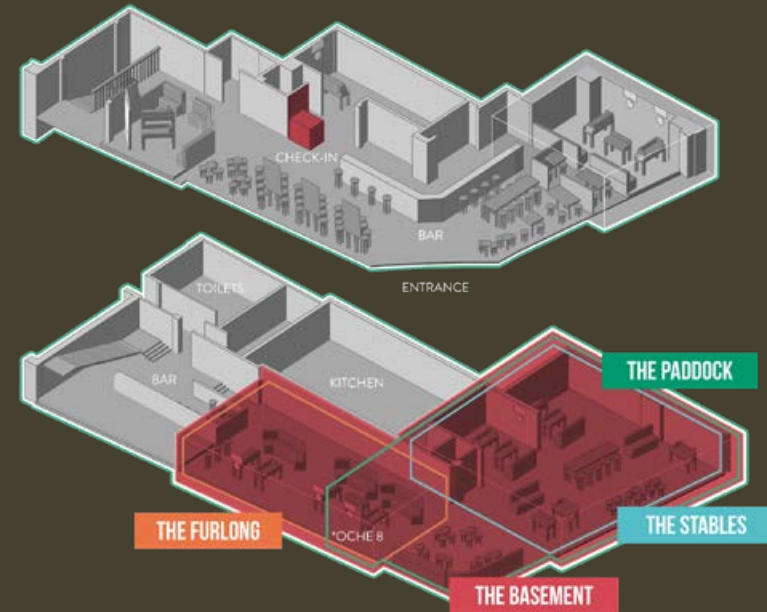
2a, Worship Street
London, EC2A 2AH

5 minute walk from Old Street
5 minute walk from Moorgate
9 minute walk from Liverpool Street



AVAILABLE SPACE

We have areas to book for up to 400 people



*OCHE 8 + THE STABLES = THE PADDOCK



THE FURLONG SEMI-PRIVATE AREA



GUEST CAPACITY	40-70 PEOPLE
NUMBER OF OCHES	3
DAYTIME MINIMUM SPEND	from: £500
EVENING MINIMUM SPEND	from: £2,000
PRESENTATIONS AVAILABLE	YES

Enjoy the incredible atmosphere in our liveliest space; The Furlong. With three oches side-by-side, this area is a gem for groups between 40 and 70 people.

Try your hand at Social Darts, indulge in our canapés and toast to your teammates without ever missing a second of the action.



THE STABLES SEMI-PRIVATE AREA



GUEST CAPACITY **70-120 PEOPLE**

NUMBER OF OCHES **4**

DAYTIME MINIMUM SPEND **from: £600**

EVENING MINIMUM SPEND **from: £3,000**

PRESENTATIONS AVAILABLE **YES**

With four oches and your very own central seating area, there's plenty of room in The Stables to eat, drink and get your game on.

Whether you're planning a product launch, party or work social, this semi-private event space is the perfect setting for groups of 70 to 120 people.



THE PADDOCK SEMI-PRIVATE AREA



GUEST CAPACITY	120-150 PEOPLE
NUMBER OF OCHES	5
DAYTIME MINIMUM SPEND	from: £750
EVENING MINIMUM SPEND	from: £3,750
PRESENTATIONS AVAILABLE	YES

With five oches and two seating areas, The Paddock is the perfect option for larger groups who need that little bit more space for their Social Darts showdown.

A semi-private space, there's plenty of room for everyone – whether you're going head-to-head in the oche or sitting back and enjoying one of our bespoke cocktails.



THE SHOREDITCH BASEMENT SEMI-PRIVATE AREA



GUEST CAPACITY	150-230 PEOPLE
NUMBER OF OCHES	7
DAYTIME MINIMUM SPEND	from: £2,000
EVENING MINIMUM SPEND	from: £7,500
PRESENTATIONS AVAILABLE	YES

Hire The Basement and make the most of seven oches, multiple seating areas and access to our beautiful, award-winning bar.

With space to show off your Social Darts skills as well as enjoy our delicious selection of food and drinks, it's the perfect space to create a truly unique event for groups of up to 230 people.



FULL VENUE SHOREDITCH



GUEST CAPACITY	400 PEOPLE
NUMBER OF OCHES	12
DAYTIME MINIMUM SPEND	from: £2,500
EVENING MINIMUM SPEND	from: £12,000
PRESENTATIONS AVAILABLE	YES

Make your event truly unforgettable with exclusive hire of Flight Club Shoreditch, the original home of Social Darts. Perfect for up to 400 guests, you'll have access to all twelve oches and our two stunning bars.

Whether you're celebrating a special occasion or hosting a teambuilding day, your event is sure to be full of unexpected, ridiculous, joy.

BLOOMSBURY

OPENING TIMES

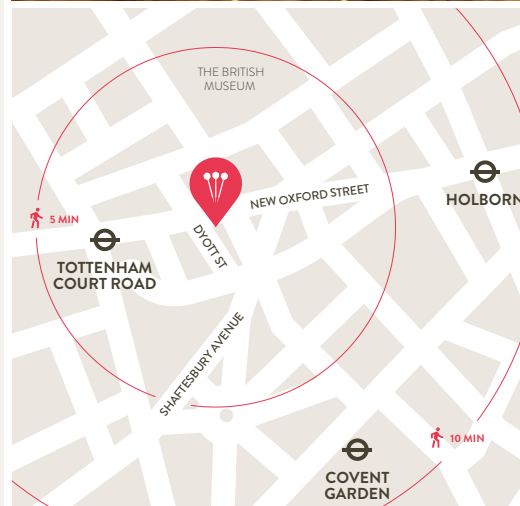
MONDAY	12:00 - 00:00
TUESDAY	12:00 - 00:00
WEDNESDAY	12:00 - 00:00
THURSDAY	12:00 - 01:00
FRIDAY	11:30 - 02:00
SATURDAY	11:00 - 02:00
SUNDAY	11:30 - 22:30

Opening hours are subject to change, for updated hours, including Christmas, please visit our website.

WHERE TO FIND US

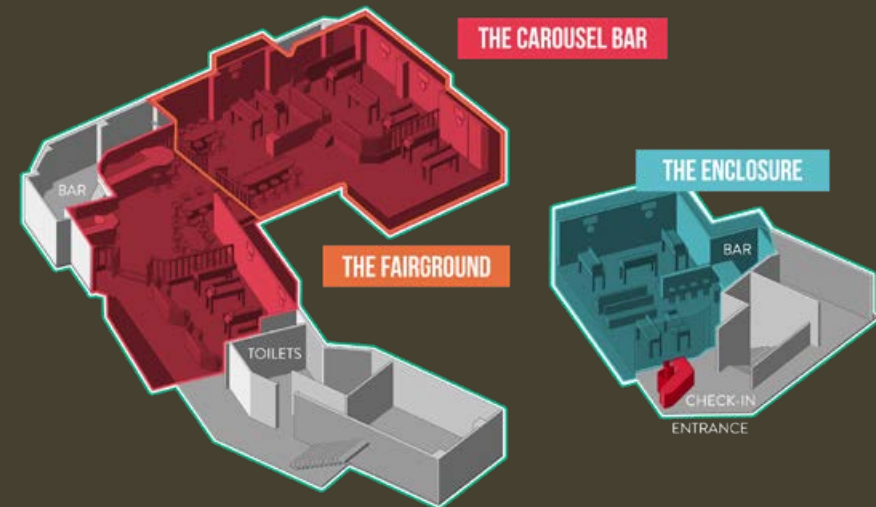
55, New Oxford Street
London, WC1A 1BS

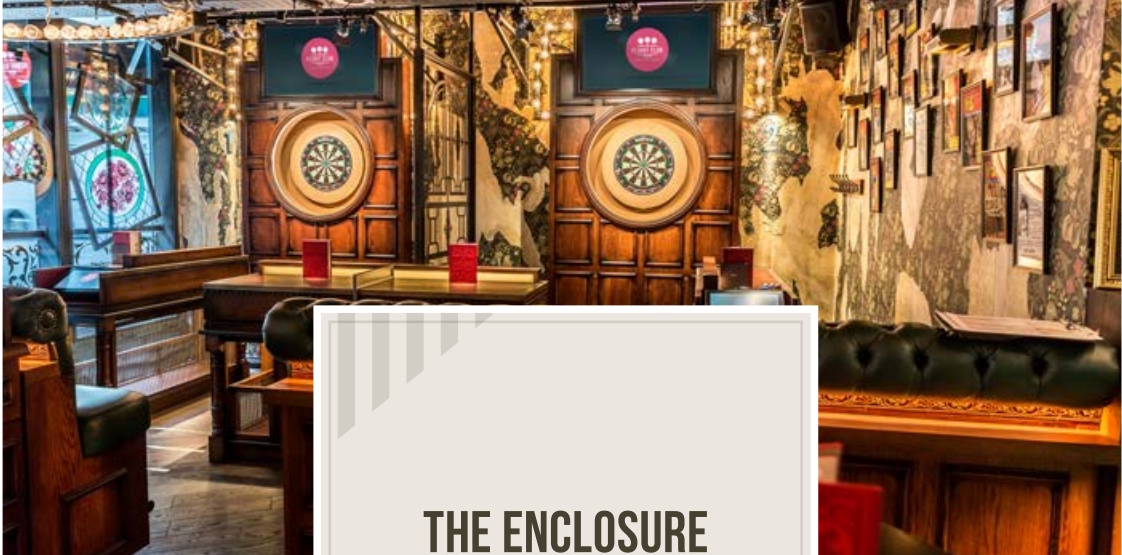
5 minute walk from Tottenham Court Road
5 minute walk from Holborn
8 minute walk from Covent Garden



AVAILABLE SPACE

We have areas to book for up to 250 people





THE ENCLOSURE PRIVATE AREA



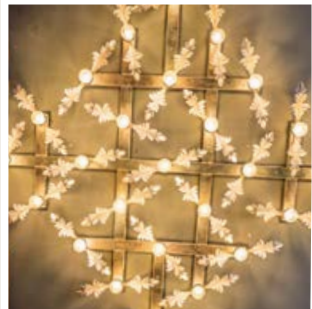
GUEST CAPACITY	40-50 PEOPLE
NUMBER OF OCHES	3
DAYTIME MINIMUM SPEND	from: £500
EVENING MINIMUM SPEND	from: £2,000
PRESENTATIONS AVAILABLE	YES

With exclusive access to three beautiful oches and a bar just for you, The Enclosure offers the ultimate Social Darts experience for groups of up to 50 people.

Whether you're stepping up to the throw line, enjoying our selection of delicious sharing plates or soaking up the electric atmosphere at the bar – there's plenty of room for an unforgettable event.



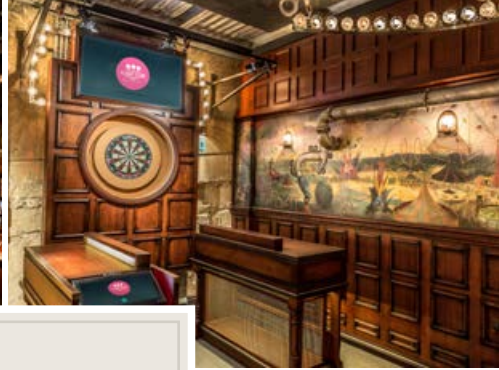
THE FAIRGROUND SEMI-PRIVATE AREA



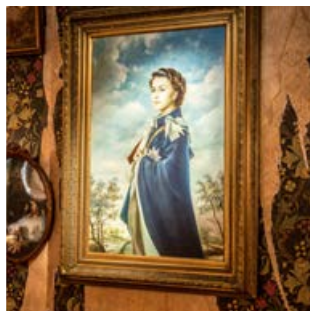
GUEST CAPACITY	50-80 PEOPLE
NUMBER OF OCHES	4
DAYTIME MINIMUM SPEND	from: £2,000
EVENING MINIMUM SPEND	from: N/A*
PRESENTATIONS AVAILABLE	YES

With four oches, joyful murals and a bird's eye view of our glorious carousel bar, The Fairground is the perfect spot for up to 80 guests to show off their Social Darts skills.

***Please note, this area is not available to hire in the evenings.**



THE CAROUSEL BAR PRIVATE AREA



GUEST CAPACITY	80-200 PEOPLE
NUMBER OF OCHES	6
DAYTIME MINIMUM SPEND	from: £2,000
EVENING MINIMUM SPEND	from: £8,000
PRESENTATIONS AVAILABLE	YES

Hire The Carousel Bar and make the most of six oches, multiple seating areas and enjoy our beautiful carousel bar all to yourself.

With space to show off your Social Darts skills as well as enjoy our delicious selection of food and drinks, it's the perfect space to create a truly unique event for groups of up to 200 people.



FULL VENUE BLOOMSBURY



GUEST CAPACITY	250 PEOPLE
NUMBER OF OCHES	9
DAYTIME MINIMUM SPEND	from: £2,500
EVENING MINIMUM SPEND	from: £10,500
PRESENTATIONS AVAILABLE	YES

Host a breathtaking event with exclusive hire of Flight Club Bloomsbury and immerse yourself in the bar's Victorian heritage.

From beautiful portraits, stunning murals and, of course, the spectacular one of a kind carousel bar, your guests are sure to have a glorious experience.

VICTORIA

OPENING TIMES

MONDAY	11:30 - 00:00
TUESDAY	11:30 - 00:00
WEDNESDAY	11:30 - 00:00
THURSDAY	11:30 - 00:00
FRIDAY	11:30 - 00:00
SATURDAY	11:00 - 00:00
SUNDAY	11:30 - 23:00

Opening hours are subject to change, for updated hours, including Christmas, please visit our website.

WHERE TO FIND US

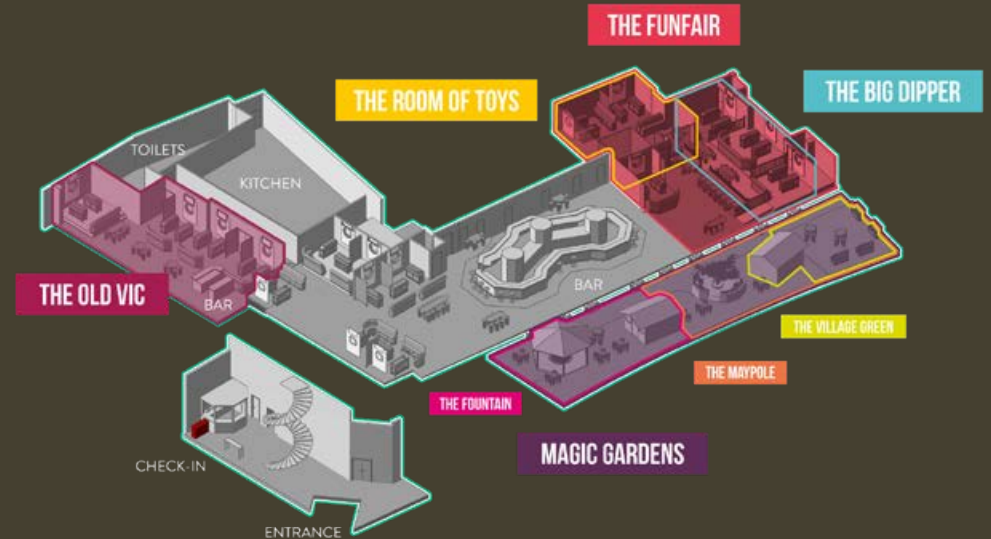
Unit 8, Sir Simon Milton Square
London, SW1E 5DJ

2 minute walk from Victoria
11 minute walk from St James's Park
14 minute walk from Hyde Park Corner



AVAILABLE SPACE

We have areas to book for up to 650 people





THE MAGIC GARDENS
VICTORIA'S BEST
KEPT SECRET



THE VILLAGE GREEN*

Host up to 40 guests and have a field day on your very own Village Green. Dial up the festivities with a dance in the disco phone box, relax on the lawn and enjoy exclusive use of the Turn and Slip Inn cabin, all hidden in the heart of Central London.



THE MAYPOLE*

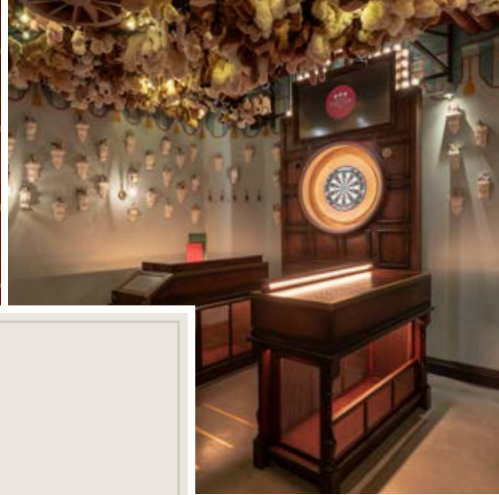
If you're looking to host an extra special event, join us around The Maypole. With exclusive use of The Village Green, there's plenty of space for up to 60 guests to have a dance.



THE FOUNTAIN*

Escape the buzz of the bar and head over to The Fountain, a secluded space nestled at the heart of our spectacular outdoor terrace. With exclusive use of The Fountain, The Potting Shed and plenty of picnic benches, this space is perfect for 50 guests.

* Please note, Social Darts is not available in The Magic Gardens, and a minimum spend on food and drink is required to hire the spaces. Private hire of The Magic Gardens is available on request, please speak to our team for more information.



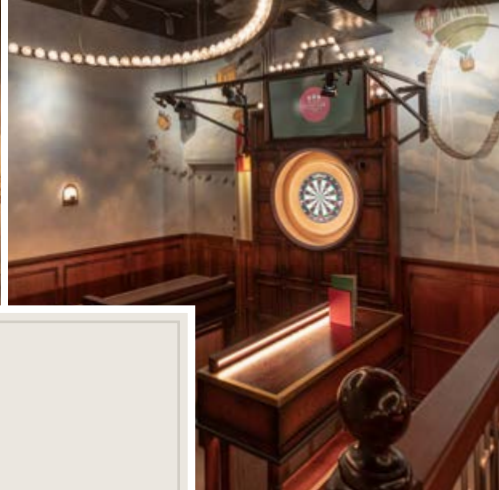
THE ROOM OF TOYS PRIVATE AREA



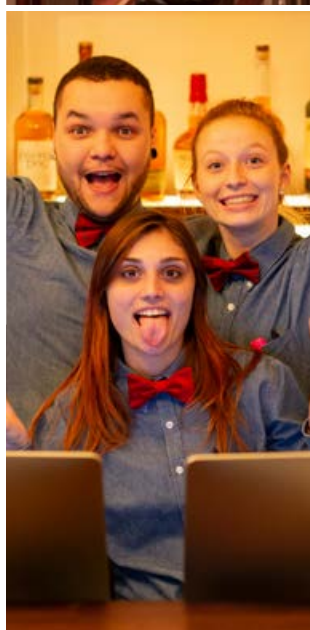
GUEST CAPACITY	30-45 PEOPLE
NUMBER OF OCHES	3
DAYTIME MINIMUM SPEND	from: £400
EVENING MINIMUM SPEND	from: £1,000
PRESENTATIONS AVAILABLE	NO

Immerse yourself in the joy and euphoria of The Room of Toys and feast your eyes on an overhead canopy of toys; inspired by fairground prizes.

With three beautiful oches and a stunning backdrop of funfair collectables, it's the ultimate prize for groups of up to 45 people.



THE BIG DIPPER SEMI-PRIVATE AREA



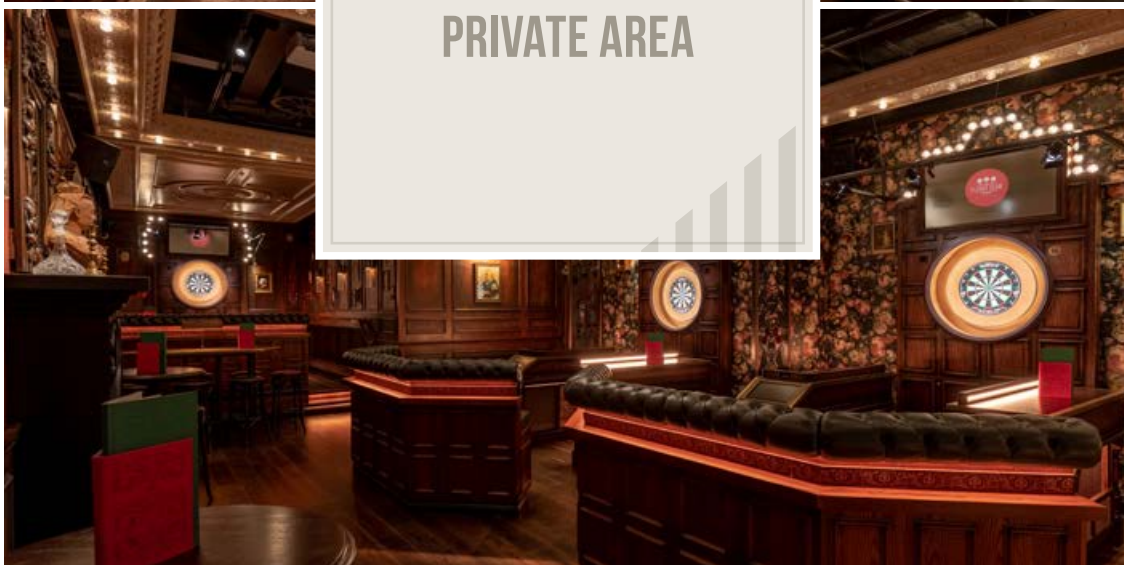
GUEST CAPACITY	45-70 PEOPLE
NUMBER OF OCHES	3
DAYTIME MINIMUM SPEND	from: £500
EVENING MINIMUM SPEND	from: £2,000
PRESENTATIONS AVAILABLE	NO

This tiered-level space allows a bird's-eye view of the action across the venue, with a hand-painted mural background invoking the movement and the excitement of Victorian fairground roller coasters.

Whether you're shouting, screaming and high-fiving at the throw line or kicking back with a delicious cocktail admiring our beautiful mural, there's plenty of room to bring up to 70 people along for the ride.



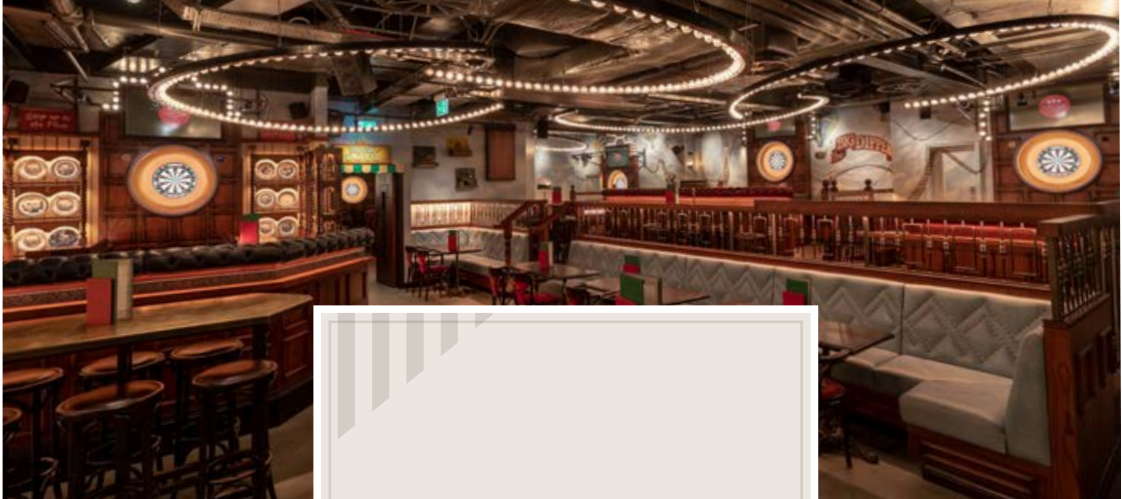
THE OLD VIC PRIVATE AREA



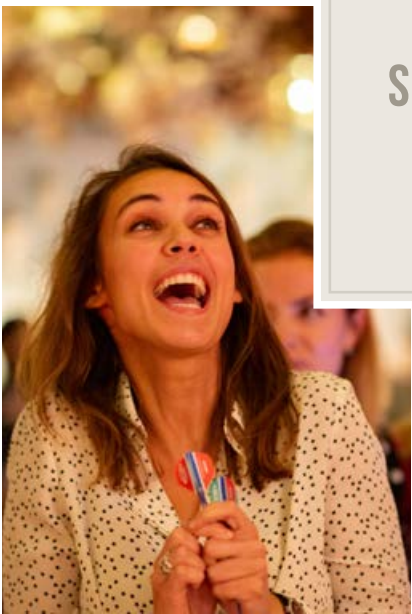
GUEST CAPACITY	60-80 PEOPLE
NUMBER OF OCHES	4
DAYTIME MINIMUM SPEND	from: £600
EVENING MINIMUM SPEND	from: £3,000
PRESENTATIONS AVAILABLE	YES

This private space is inspired by the warmth and lustre of the traditional British pub and is an eclectic, eccentric homage to Queen Victoria and her spirit of adventure, discovery and travel.

From cheering on your Tournament teammates to tucking into our delicious food and drinks selection, this hidden Regal wonder offers the perfect backdrop to every element of your event for up to 80 people.



THE FUNFAIR SEMI-PRIVATE AREA



GUEST CAPACITY **80-150 PEOPLE**

NUMBER OF OCHES **7**

DAYTIME MINIMUM SPEND **from: £750**

EVENING MINIMUM SPEND **from: £6,500**

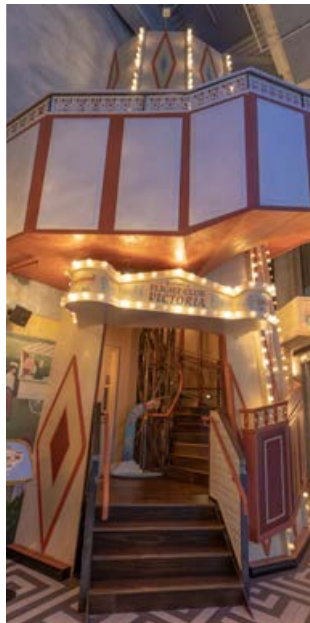
PRESENTATIONS AVAILABLE **NO**

The excitement and vibrancy of The Funfair is expressed through custom-designed oche spaces which reference classic fairground games; laid out to create a dynamic, exciting journey, imbued with a sense of discovery and wonder.

Secluded enough to make it your own but still close enough to the action to soak up the electric atmosphere, it's a winning space for 80 to 150 people.



FULL VENUE VICTORIA



GUEST CAPACITY	650 PEOPLE
NUMBER OF OCHES	18
DAYTIME MINIMUM SPEND	from: £5,000
EVENING MINIMUM SPEND	from: £22,500
PRESENTATIONS AVAILABLE	YES*

Experience Flight Club Victoria in all its glory with full venue hire. You and up to 650 guests will have exclusive access to all 18 oches and spacious seating areas throughout our stunning fairground in the sky, as well as our glorious outdoor hideaway, The Magic Gardens.

Whether it's for a company social, product launch or a special celebration, it's guaranteed to be a unique and unforgettable Flight Club experience.

***Presentations are available in the Old Vic**



TO FIND OUT ABOUT
OUR OTHER SITES, GO TO
FLIGHTCLUBDARTS.COM

BOOK NOW

For more information, or to book,
simply visit our website: flightclubdarts.com
email our team on: events@flightclubdarts.com
or give us a call on: **0203 019 3093**

facebook



tripadvisor



designmynight



“A highly innovative twist on a traditional space, with evident attention to detail on tech, lighting, catering and customer experience. There is strong evidence of a highly positive reaction from the market, and attention to detail in staff training and presentation.”

JUDGING PANELLIST
LONDON VENUE AWARDS

